

EI-10258

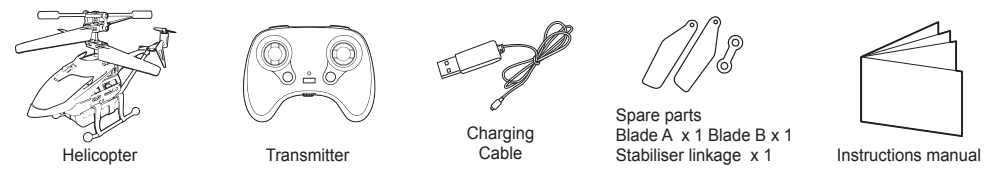
SKY BOMBUS

Frequency Band Range: 2400 - 2483.5MHz
Maximum Radio-Frequency Power: < 10dBm
For Ages 10+
Herby, Silverlit Toys Manufactory Ltd declares that the radio equipment 84764 is in compliance with Directive 2014/53/EU.
The full text of the EU declaration of conformity is available at the following internet address: www.silverlit.com/certificate

This toy is only to be connected to equipment bearing either of the following symbols: OR

WARNING:
CHOKING HAZARD - Small parts.
Not for Children under 3 years.

Delivery contents



Precautions, Warnings & Statements

Waste Electrical and Electronic Equipment (WEEE)

When this appliance is out of use, please remove all batteries and dispose of them separately. Bring electrical appliances to the local collecting points for waste electrical and electronic equipment. Other components can be disposed of in domestic refuse.

Waste Electrical and Electronic Equipment (WEEE)

When this appliance is out of use, please remove all batteries and dispose of them separately. Bring electrical appliances to the local collecting points for waste electrical and electronic equipment. Other components can be disposed of in domestic refuse.

Safety precautions:

- Changes or modifications to this unit not expressly approved by the party responsible for compliance could void the user's authority to operate the equipment.
- The USB cable is later-made for charging the LiPo battery in the helicopter. Do not use it to charge any other batteries.

Special notes:

- Before first use, Read the user's information together with your child.
- This toy intended to be used in domestic area (house and garden) only.
- Do not change or modify anything on the helicopter.
- Parental guidance is recommended when installing or replacing batteries.

USB cable statement:

- If battery cannot be charged, Please try another adapter.
- The product must only be used with the provided USB cable for charging.
- Do not use high output adapter for battery charging (1A or above).
- Transformer or battery charger used with the toy are to be regularly examined for damage to the cord, plug, enclosure and other parts, and in the event of such damage, they must not be used until the damage has been repaired.

FCC Statements

This device complies with part 15 of the FCC rules. Operation is subject to the following two conditions:
1) This device may not cause harmful interference, and
2) This device must accept any interference received, including interference that may cause undesired operation.
NOTE: This equipment has been tested and found to comply with the limits for a Class B digital device, pursuant to Part 15 of the FCC Rules. These limits are designed to provide reasonable protection against harmful interference in a residential installation. If this equipment does cause harmful interference to radio or television reception, which can be determined by turning the equipment off and on, the user is encouraged:
- Reorient or relocate the receiving antenna.
- Increase the separation between the equipment and receiver.
- Connect the equipment into an outlet on a circuit different from that to which the receiver is connected.
- Consult the dealer or an experienced radio/TV technician for help.

This helicopter is equipped with a LiPo rechargeable battery, please pay attention to the following cautions for safety use:

- Do not dispose the battery in fire or heat.
- Do not use or leave the battery near a heat source such as fire or heater.
- Do not strike or throw the battery against hard surface.
- Do not immerse the battery in water, and keep the battery in a cool dry environment.
- When recharging, only use the battery charger specifically for that purpose.
- Do not over-charge the battery.
- Do not connect the battery to an electrical outlet.
- Do not directly solder the battery and pierce the battery with a nail or other sharp object.
- Do not disassemble or alter the battery.
- Charge the battery every 6 months.
- Do not transport or store the battery together with metal objects such as necklaces, hairpins etc.
- As for a used battery, please recycle after covering the battery terminals with insulation tape or inserting it to an individual poly-bag.

Notes:

- Under the environment with electrostatic discharge, the product may malfunction and require user to reset the product.
- New alkaline batteries are recommended to use in this product to obtain best and maximum performance.
- If battery cannot be charged, Please try another adapter.
- The product must only be used with the provided USB cable for charging.
- Do not use high output adapter for battery charging (1A or above).

Silverlit SAS,
80 rue Barthelemy Danjou, 92100
Boulogne-Billancourt / France.
©2023 Silverlit. All rights reserved.

Tip! Safety hints

- Never take apart or attempt to modify the product. This could damage the product.
- Helicopter piloting requires specific skills and should be learned under direct supervision of an experienced adult.
- Never operate the product if it has damaged parts.
- This product is designed for indoor use only. Wind and short transmission range can lead to loss of control.
- Caution: Do not start up and fly when persons, animals or any obstructions are within the flying range of the helicopter.
- Do not fly the helicopter in the vicinity of water and power lines.
- For safe use, the room where the toy is used must be sufficiently large.
- Always keep your eyes on the helicopter and prevent it from landing or crashing near your head, your body or on other people.
- Stand during operation in order to get out of the way of the helicopter quickly if necessary.
- Always switch the helicopter and the transmitter off when not operating.
- Warning! Do not touch the running rotors. Keep hands, hair and loose clothes away from moving parts to avoid injury.
- Never hold or throw any objects into the running rotors.
- Caution: Risk of eye injuries. Do not fly near your face to avoid injuries.
- Instruction sheet and packaging must be retained since it contains important information.

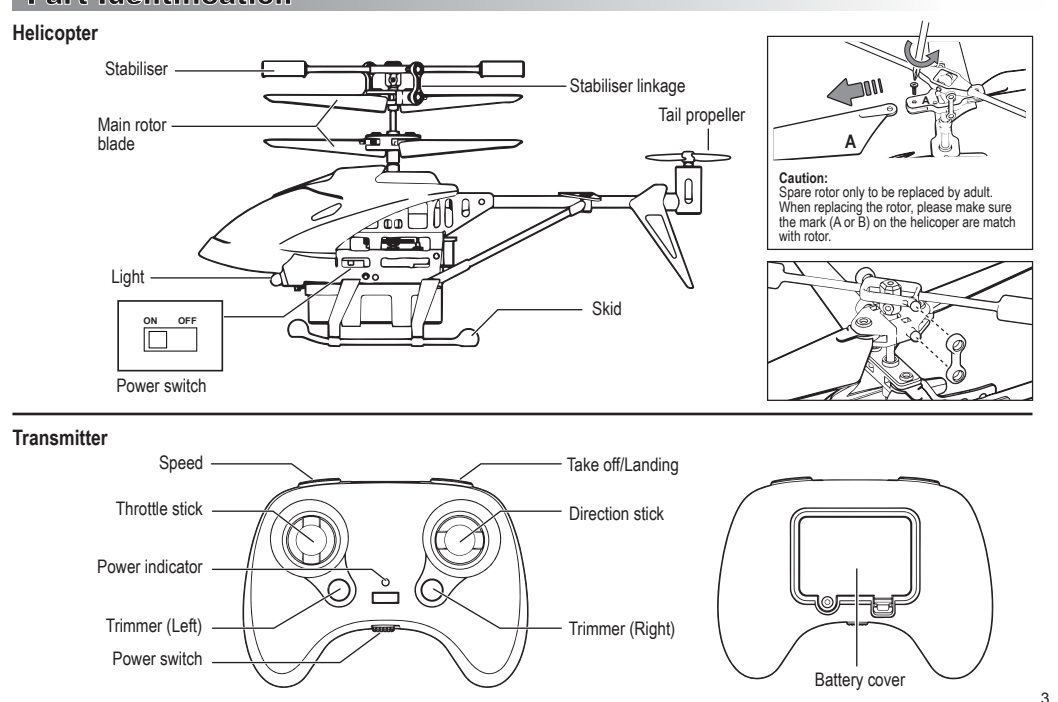
- Battery warnings:**
- Non-rechargeable batteries are not to be recharged.
 - Rechargeable batteries are to be removed before being charged. (Transmitter only)
 - Rechargeable batteries are only to be charged under adult supervision. (Transmitter only)
 - Different types of batteries or new and used batteries are not to be mixed. (Transmitter only)
 - Only batteries of the same or equivalent type as recommended are to be used.
 - Batteries are to be inserted with correct polarity (+ and -)
 - Exhausted batteries are to be removed from the product. (Transmitter only)
 - The supply terminals are not to be short-circuited.
 - Do not mix old and new batteries. (Transmitter only)
 - Do not mix alkaline, standard carbon-zinc or rechargeable (nickel-cadmium) batteries. (Transmitter only)

Care and Maintenance:

- Always remove batteries from the product when it is not being used for a long period of time. (Transmitter only)
- Wipe the product gently with a clean damp cloth.
- Keep the product away from direct heat.
- Do not submerge the product into water that can damage the electronic assemblies.

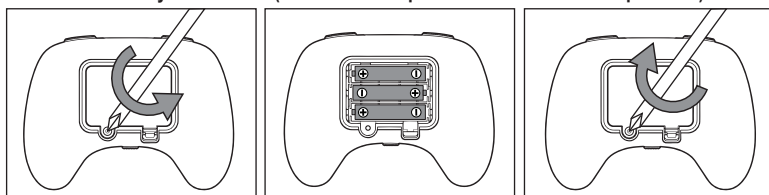
- Battery requirement for Transmitter:**
- Power Supply :
 - Rating : DC 4.5 V, 0.5 W
 - Batteries : 3 x 1.5 V "AAA"/LR03/AM4 (not included)
- Battery requirement for Helicopter:**
- Power Supply :
 - Rating : DC 3.7 V, 9 W
 - Batteries : 1 x 3.7 V LiPo Rechargeable Battery Pack (included)

Part Identification



Battery Installation & Charging

Transmitter Battery Installation ("Make sure the power switch is on "OFF" position.)



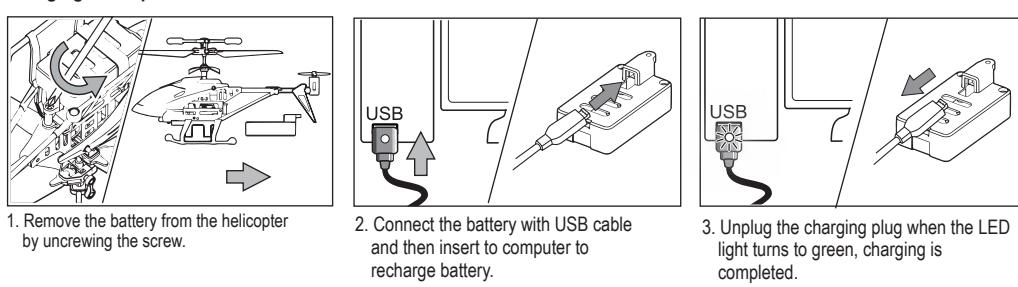
Note: When the power indicator on transmitter starts blinking, replace the batteries.

Warning!

Remove these batteries from the unit by pulling up on one end of each battery positive, by hand.

DO NOT remove or install batteries using sharp or metal tools.

Charging Helicopter



Note: 1. The helicopter can operate for about 4 - 5 minutes per every 20 - 30 minutes charging.
2. Before recharging the battery, wait 10 - 15 minutes for it to cool down.

Flying Your Helicopter

Tip! Piloting hints

- For controlling the sticks on transmitter, try not to push the sticks immediately any extreme positions. It should be like steering a bicycle rather than pressing computer game sticks.
- For the novice pilot (after the trimming procedure is completed), it is highly recommended to focus exclusively on learning to control the throttle stick first. If the helicopter turns around by itself there is no need to keep it straight. For the first flight, it is important to learn to keep the helicopter at a constant altitude of around 1 meter with very gentle inputs on the throttle stick. Once the pilot masters this, he may start learning to take control with the direction stick.

1. Procedure for PAIR / SYNC the helicopter and transmitter

2.4 GHz technology allows for many helicopter to fly without signal interference. A connection, PAIR / SYNC, must be made between the helicopter and the transmitter to function. Follow these steps to PAIR/SYNC the helicopter and the transmitter.

- Turn the Power Switch button to "ON" position on the helicopter.
- Place the helicopter on the ground with the tail point towards you and the nose pointing away.
- Switch on the transmitter.
- When the power indicator become flash. Push the throttle stick to top then pull down to bottom. The pair procedure is completed when the power indicator is light up. (Fig 1)

2. Flight Environment

Choose the place which meets the following condition:

- Indoor environment with calm air. Beware of the air circulation from the air-conditioner.
- Caution: There must not be any dangerous objects (electric fan, air-conditioner, reading lamp, etc) on the flight path.

3. Trimming the helicopter:

- Gently push the throttle up to raise your helicopter about 0.5 to 1 meter high.

When the helicopter spirals (fig. 5) or keeps turning anticlockwise (fig. 6), press the right side of the yaw trim button ("R") repeatedly until the helicopter flies straight (fig. 7).

4. Flight control:

Hover up and down:

When the helicopter flies steadily, slowly push the throttle stick up to make helicopter fly higher, or lower the stick a bit to make helicopter fly lower. Only small amounts of stick position change are required for smooth flying.

Turn left and right:

Maintain the helicopter at a certain height. Push the direction stick toward left to turn the helicopter anticlockwise, and push the direction stick toward right to turn it clockwise.

Forward and backward flight:

Maintain the helicopter at a certain height. Push the direction stick upward to fly the helicopter forward. Push it downward to fly the helicopter backward.

5. Lift-off procedures (after trimming procedure):

- Put the helicopter on a smooth surface. Uneven floor surface will affect its lifting off.
- Slowly increase the throttle.
- Do not look at the transmitter but focus on the helicopter.
- As soon as the helicopter leaves ground, reduce the throttle slightly. (In the worst case, helicopter will go back to the floor but that is better than crashing against the ceiling.)
- Very gently add the throttle if the helicopter descends.
- Very gently reduce the throttle if the helicopter ascends.
- For turning, give short and small inputs to the direction stick. (Most beginners will easily overcontrol the helicopter.)

5. Helicopter headlight

- Switch on the helicopter the headlight will light up automatically.

Troubleshooting

Symptom	Cause	Correction
The helicopter does not response.	- The helicopter and/ or the transmitter is switch off ("OFF"). - The battery of the helicopter is weak.	- Set the power switch to "ON" - Recharge the battery of the helicopter.
Suddenly stop and drop down when flying.	- The battery of the helicopter is weak.	- Recharge the battery of the helicopter.
Loss of control.	- Another radio control device using the same frequency and channel is operated near your helicopter. - Out of the control range of distance - Propeller is deformed or distorted by crashes.	- Avoid these if possible, or choose another place to operate the helicopter. - The transmission range is up to 30 meters in open space. - Replace the rotor blade with the spare one provided.