



Scan the QR code for more instructions online

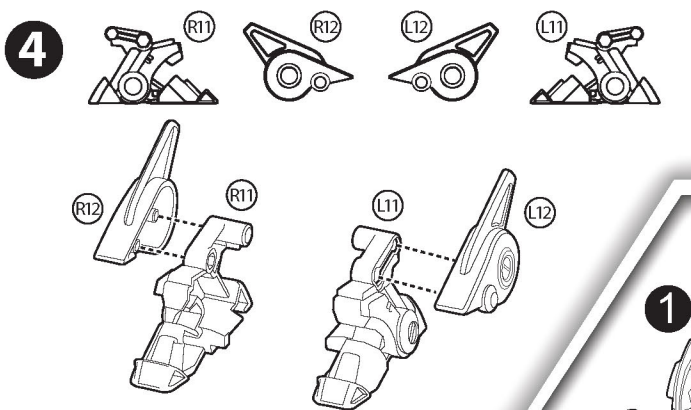
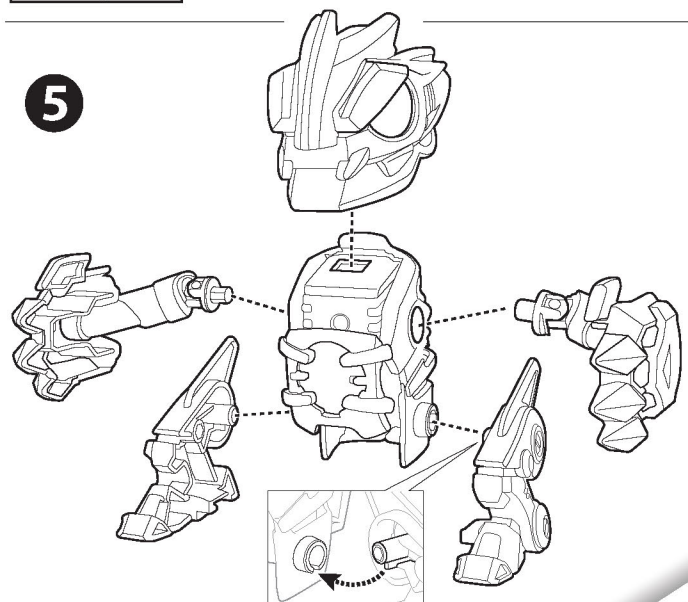
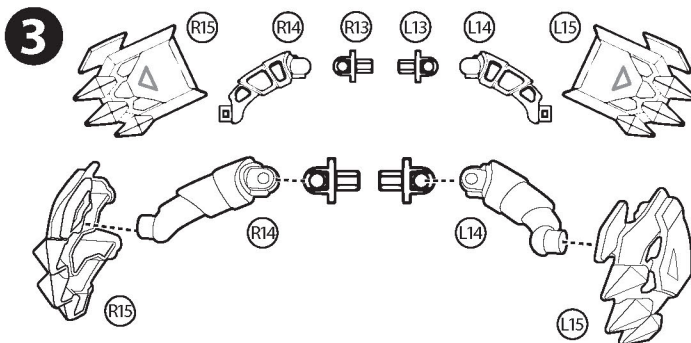
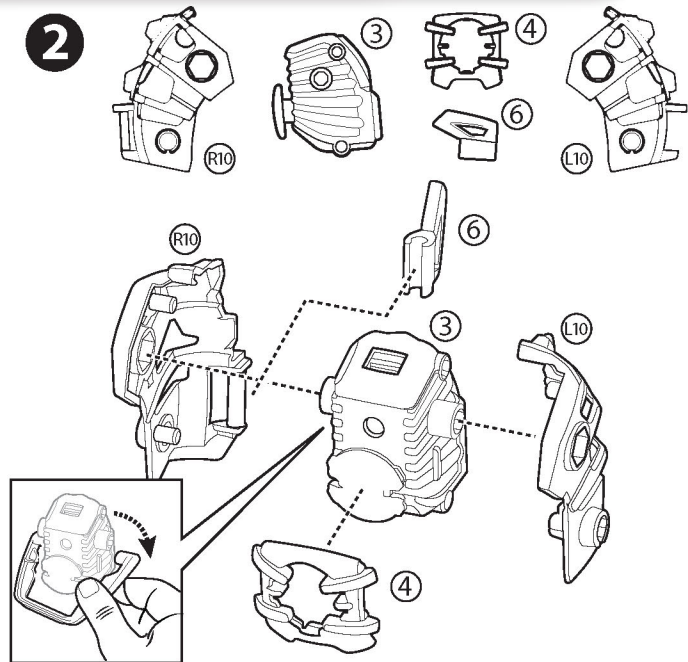
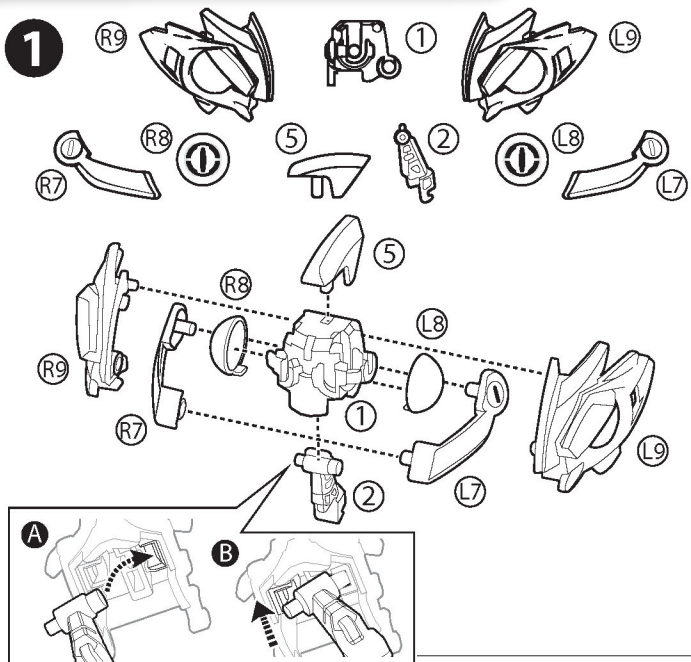
- Den QR-Code scannen, um weitere Anweisungen online zu erhalten • Scannez le QR code pour plus d'informations en ligne
- Scan de QR-code voor meer instructies online • Escanea el código QR para obtener más instrucciones online
- Scansiona il codice QR per ulteriori istruzioni online • Отсканируйте QR-код для ознакомления с более подробными инструкциями онлайн • Digitalize o código QR para más informações online



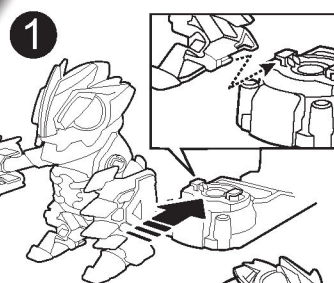
*Not included in 88670 character pack.

- *Im Figuren-Pack 88670 nicht enthalten. • *Non inclus dans le pack personnage 88670.
- *Niet inbegrepen in 88670 personagepakket. • *No incluido en el paquete del personaje 88670.
- *Non incluso nel set di personaggi 88670. • *Не входит в набор персонажей 88670.
- *Não incluido no conjunto da personagem 88670.

EI-9713



*HOW TO PLAY • Spielen • Comment jouer • Hoe te spelen • Cómo se juega • Come giocare • Как играть • Como utilizar



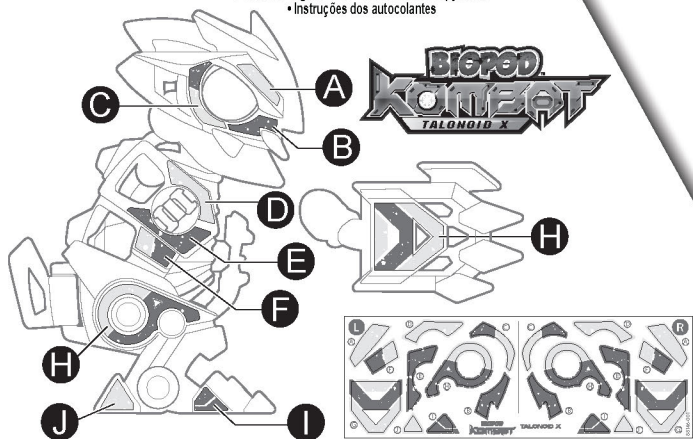
- 1 Install on the stand**
- Auf dem Ständer befestigen
 - Fixer le jouet sur le socle
 - Installer op de standaard
 - Instalar en la base
 - Installazione sul supporto
 - Установите на подставке
 - Instalar no suporte



- Pull or Push to Punch!**
- Ziehe oder drücke, um zuzuschlagen!
 - Tirer ou pousser pour donner des coups!
 - Trek of duw om te slaan!
 - ¡Tira o empuja para golpear!
 - Tira o spingi per colpire!
 - Тяните или толкайте для удара!
 - Puxa ou pressiona para darses um soco!

Label Instruction

- Anweisungen auf dem Etikett • Placement des autocollants
- Labelinstructies • Instrucciones de los adhesivos
- Posizione degli adesivi • Этикетка с инструкцией
- Instruções dos autocollantes





Scan the QR code for more instructions online

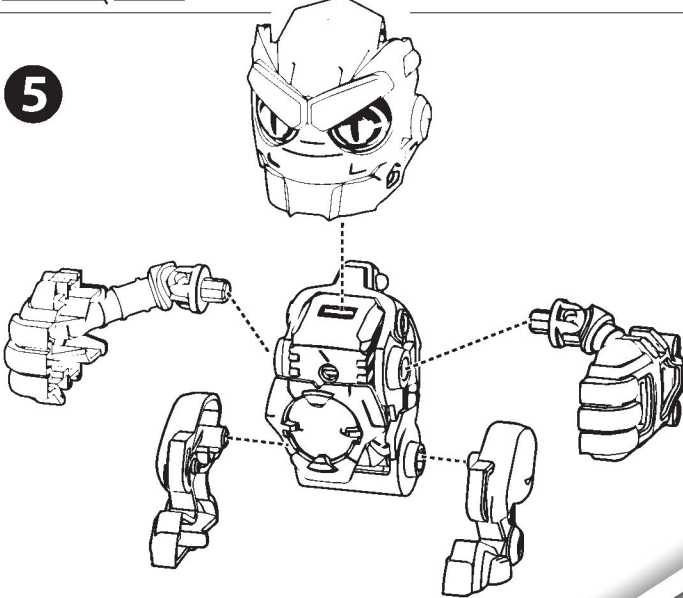
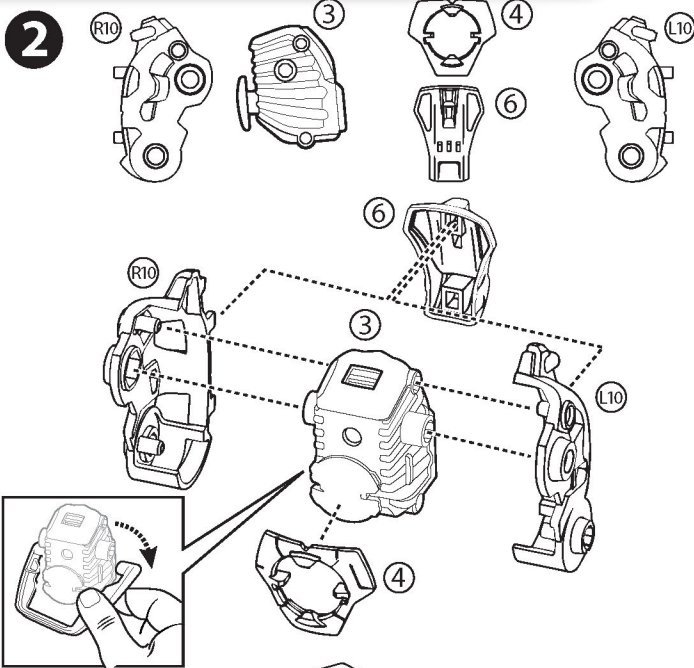
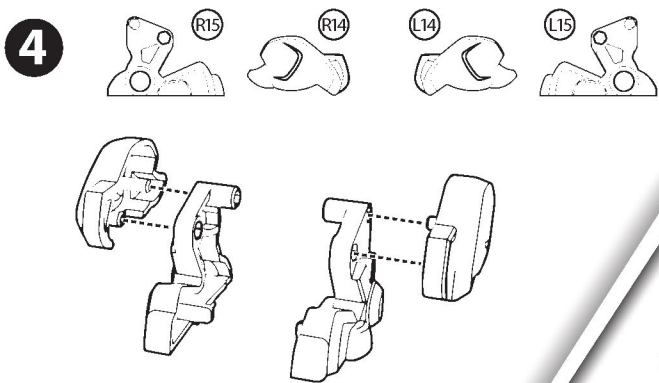
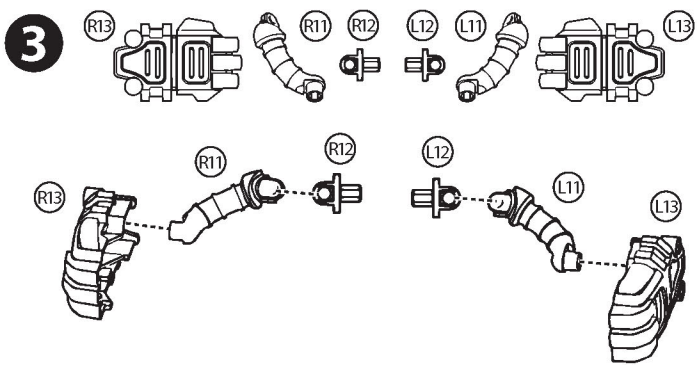
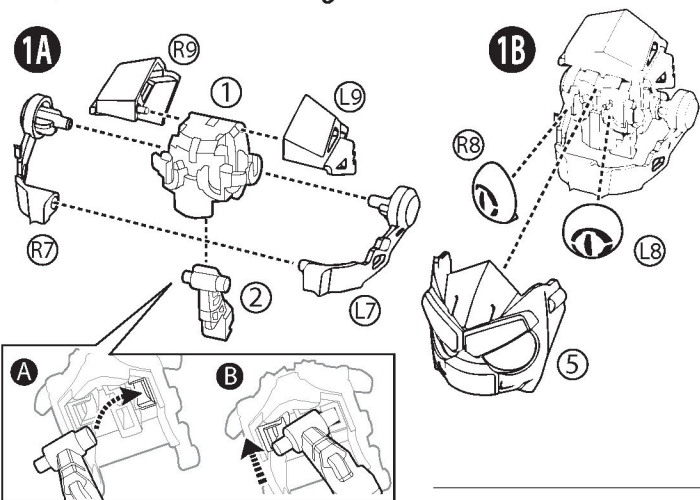
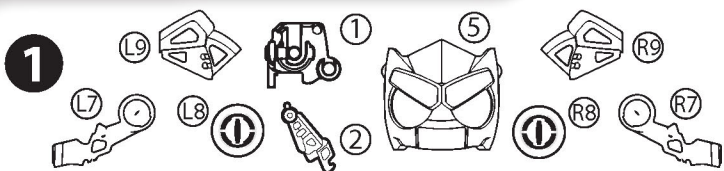
- Den QR-Code scannen, um weitere Anweisungen online zu erhalten • Scannez le QR code pour plus d'instructions en ligne
- Scan de QR-code voor meer instructies online • Escanea el código QR para obtener más instrucciones online
- Scansiona il codice QR per ulteriori istruzioni online • Отсканируйте QR-код для ознакомления с более подробными инструкциями онлайн • Digitalize o código QR para mais informações online



*Not included in 88670 character pack.

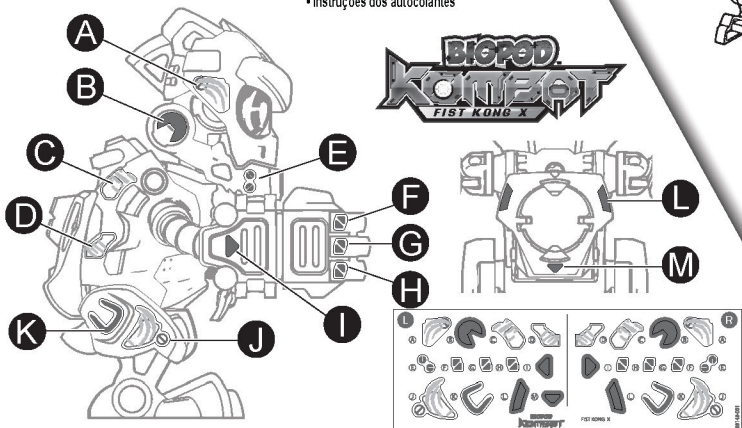
- *Im Figuren-Pack 88670 nicht enthalten. • *Non inclus dans le pack personnage 88670.
- *Niet inbegrepen in 88670 personagepakket. • *No incluido en el paquete del personaje 88670.
- *Non incluso nel set di personaggi 88670. • *He входит в набор персонажей 88670.
- *Não incluído no conjunto da personagem 88670.

EI-9717



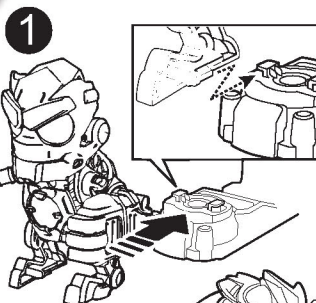
Label Instruction

- Anweisungen auf dem Etikett • Placement des autocollants
- Labelinstructies • Instrucciones de los adhesivos
- Posizione degli adesivi • Этикетка с инструкцией
- Instruções dos autocollantes

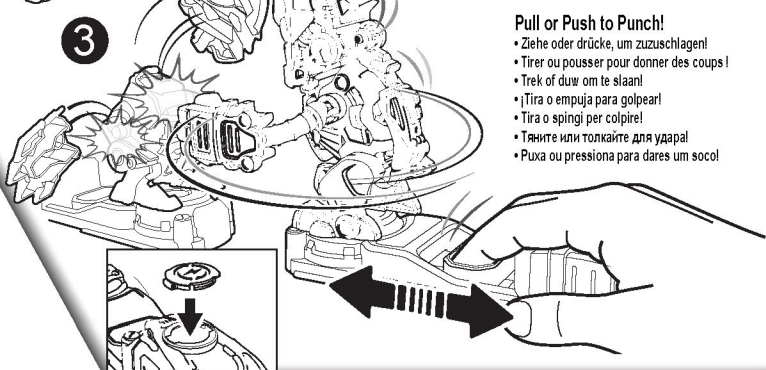
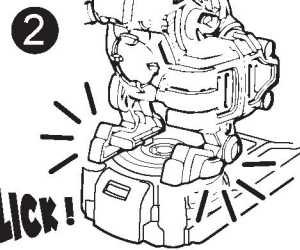


*HOW TO PLAY

- Spielen • Comment jouer • Hoe te spelen • Cómo se juega
- Come giocare • Как играть • Como utilizar



- Install on the stand
- Auf dem Ständer befestigen
 - Fixer le jouet sur le socle
 - Installeer op de standaard
 - Instalar en la base
 - Installazione sul supporto
 - Установите на подставке
 - Instalar no suporte



- Pull or Push to Punch!
- Ziehe oder drücke, um zuzuschlagen!
 - Tirer ou pousser pour donner des coups!
 - Trek of duw om te slaan!
 - Tira o empuja para golpear!
 - Tira o spingi per colpire!
 - Тяните или толкайте для удара!
 - Puxa ou pressiona para dares um soco!



Scan the QR code for more instructions online

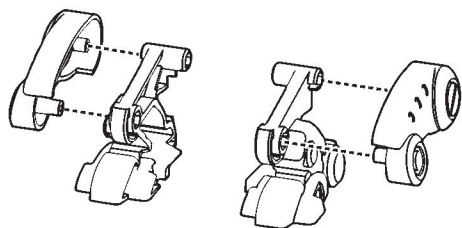
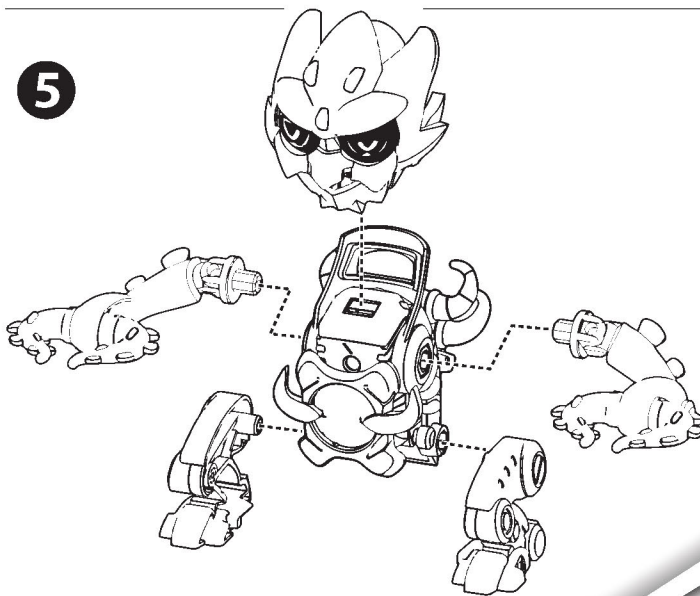
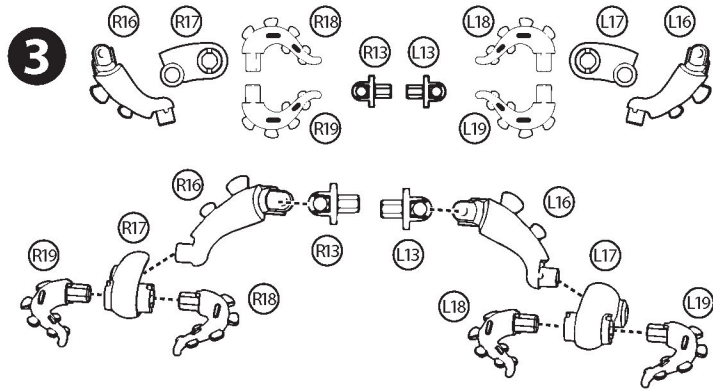
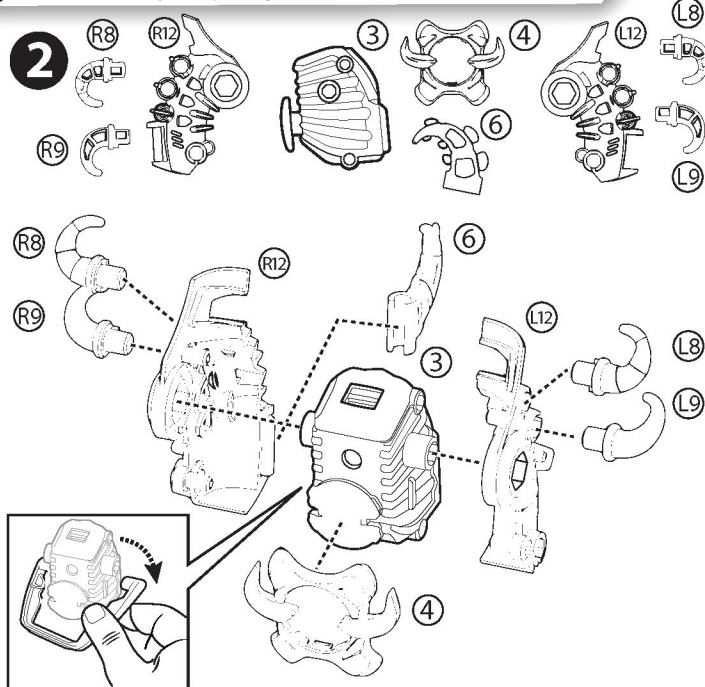
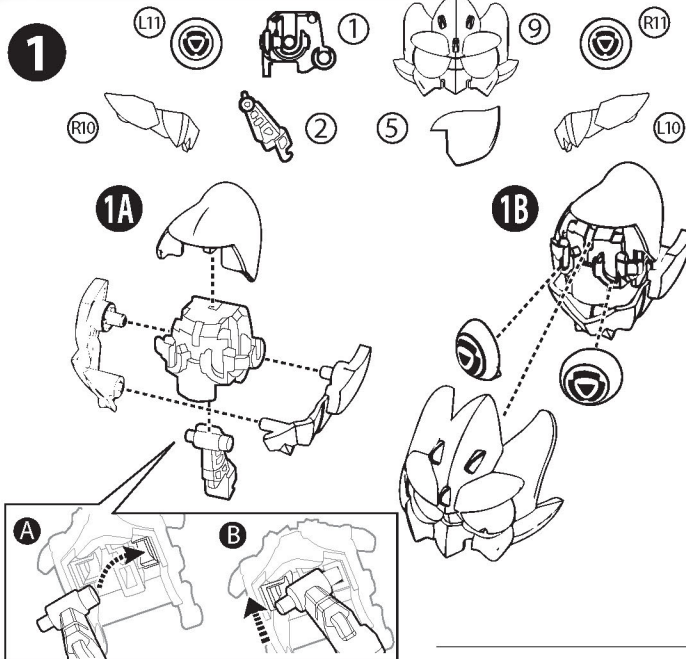
- Den QR-Code scannen, um weitere Anweisungen online zu erhalten. • Scannez le QR code pour plus d'instructions en ligne
- Scan de QR-code voor meer instructies online • Escanea el código QR para obtener más instrucciones online.
- Scansiona il codice QR per ulteriori istruzioni online • Отсканируйте QR-код для ознакомления с более подробными инструкциями онлайн. • Digitalize o código QR para mais informações online



* Not included in 88670 character pack.

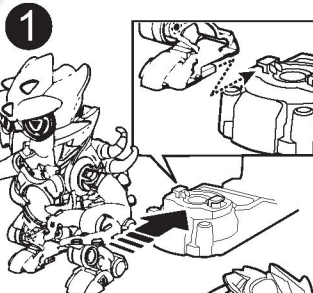
- *Im Figuren-Pack 88670 nicht enthalten. • *Non inclus dans le pack personnage 88670.
- *Niet inbegrepen in 88670 personagepakket. • *No incluido en el paquete del personaje 88670.
- *Non incluso nel set di personaggi 88670. • *He входит в набор персонажей 88670.
- *Não incluído no conjunto da personagem 88670.

EI-9716



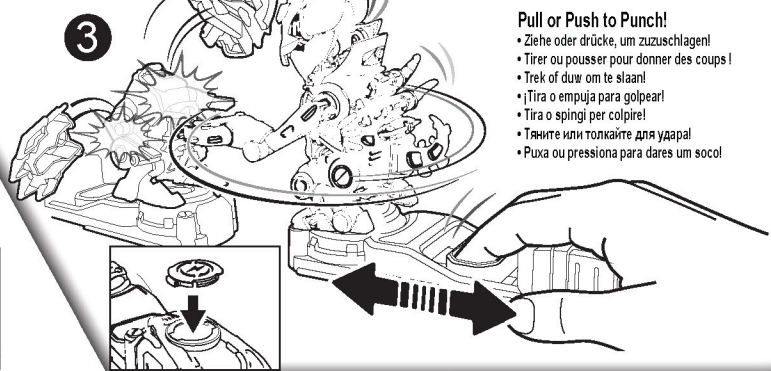
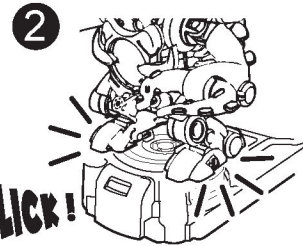
* HOW TO PLAY

• Spielen • Comment jouer • Hoe te spelen • Cómo se juega
• Come giocare • Как играть • Como utilizar



Install on the stand

- Auf dem Ständer befestigen
- Fixer le jouet sur le socle
- Installeer op de standaard
- Instalar en la base
- Installazione sul supporto
- Установите на подставке
- Instalar no suporte

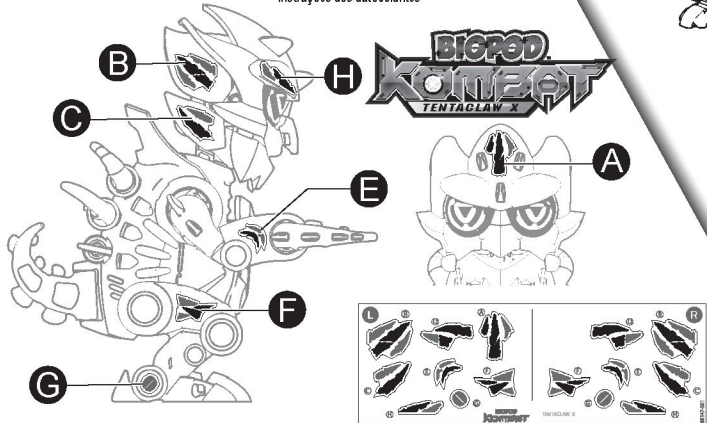


Pull or Push to Punch!

- Ziehe oder drücke, um zuzuschlagen!
- Tirer ou pousser pour donner des coups!
- Trek of duw om te slaan!
- Tira o empuja para golpear!
- Tira o spingi per colpire!
- Тяните или толкайте для удара!
- Puxa ou pressiona para dares um soco!

Label Instruction

- Anweisungen auf dem Etikett • Placement des autocollants
- Labelinstructies • Instrucciones de los adhesivos
- Posizione degli adesivi • Этикетка с инструкцией
- Instruções dos autocolantes

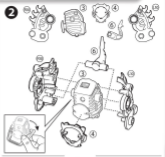
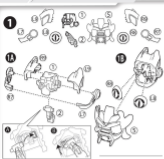




Scan the QR code for more instructions online.
 © 2015 Hasbro. All rights reserved. LEGO, the LEGO logo, the LEGO minifigure character and the "LEGO" brand name are trademarks of the LEGO Group. © 2015 The LEGO Group. All other trademarks are the property of their respective owners.

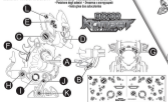


*Not included in LEGO character pack.
 • LEGO Star Wars™ Force FX™ character pack - Includes data in pack (page 100)
 • LEGO Star Wars™ Force FX™ character pack - Includes data in pack (page 100)
 • LEGO Star Wars™ Force FX™ character pack - Includes data in pack (page 100)
 • LEGO Star Wars™ Force FX™ character pack - Includes data in pack (page 100)

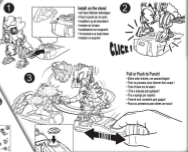


Label Instruction

Change the color filter. Remove the color filter. Place the color filter on the back of the head. Attach the color filter. Attach the color filter. Attach the color filter.



HOW TO PLAY Spin • Connect your Force FX spin • Come on, jump • Come on, jump • Come on, jump • Come on, jump



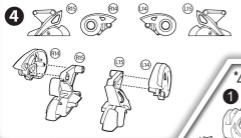
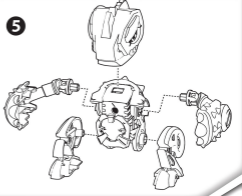
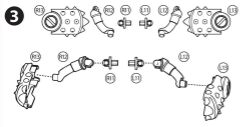
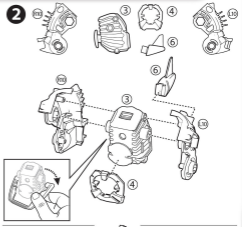
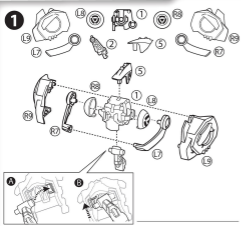


Scan the QR code for more instructions online

- Con il QR code scarica un video illustrativo online su come utilizzare il QR code per più istruzioni e tip
- Scan de QR code scanare videoclipul online • Escaneie el codul QR pentru mai multe instructiuni si tip
- Scansati kod QR da internetu online • Escaneie QR kodu za dodatne instrukcije i tipove
- Scansate código QR para ver más instrucciones online • Escaneie o etiqueta QR para obter mais instruções online
- Scansate kódu QR na internetu online • Escaneie QR kódu za dodatne instrukcije i tipove

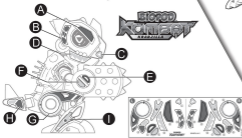


- *Not included in 68670 character pack.
- *In Figure-Pack 68670 nicht enthalten.
- *Non inclus dans le pack personnage 68670.
- *Niet inbegrepen in 68670 persoonpakket.
- *No incluido en el paquete del personaje 68670.
- *Non incluso nel set di personaggio 68670.
- *Nilo uključeno u kompletu za likove 68670.

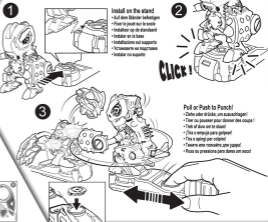


Label Instruction

- Anbringen auf dem Ellend • Placement des accessoires
- Adheziune etichetelor • Instalarea de la adheziune
- Posizionare degli adesivi • Inserirre e accoppiare
- Instalación de los accesorios



'HOW TO PLAY' • Spelen • Comment jouer • Hoe te spelen • Como se juega • Come giocare • Как играть • Como utilizar



- Pull or Push to Punch!**
- Déplacer vers l'avant, ou pousser!
 - Trage ou pousse pour donner des coups!
 - Push of draw on to punch!
 - Trase o empurr para golpear!
 - Trase o spring per colpire!
 - Trase o empujar para dar un golpe!
 - Trase ou pressione para dar um soco!